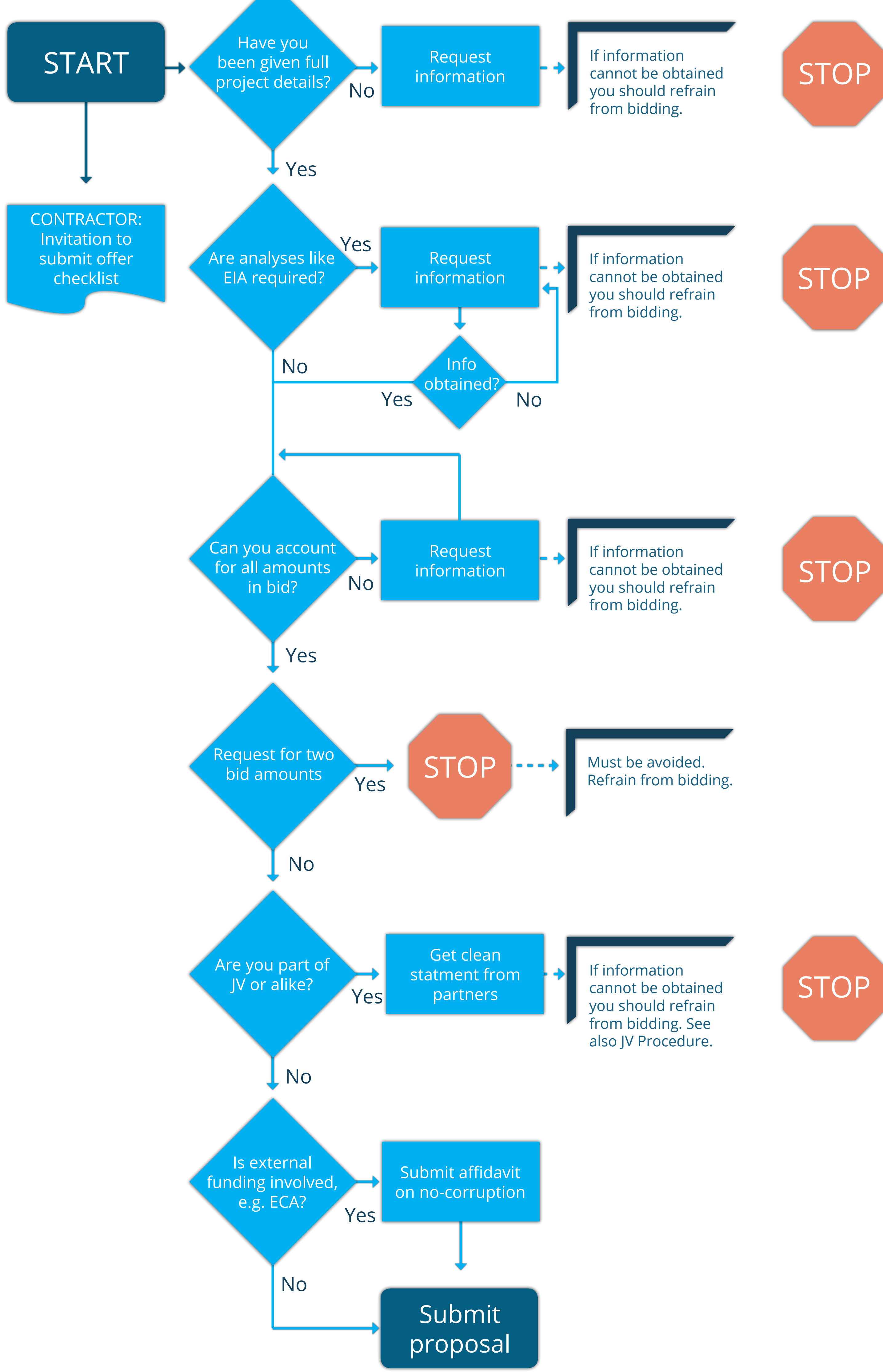


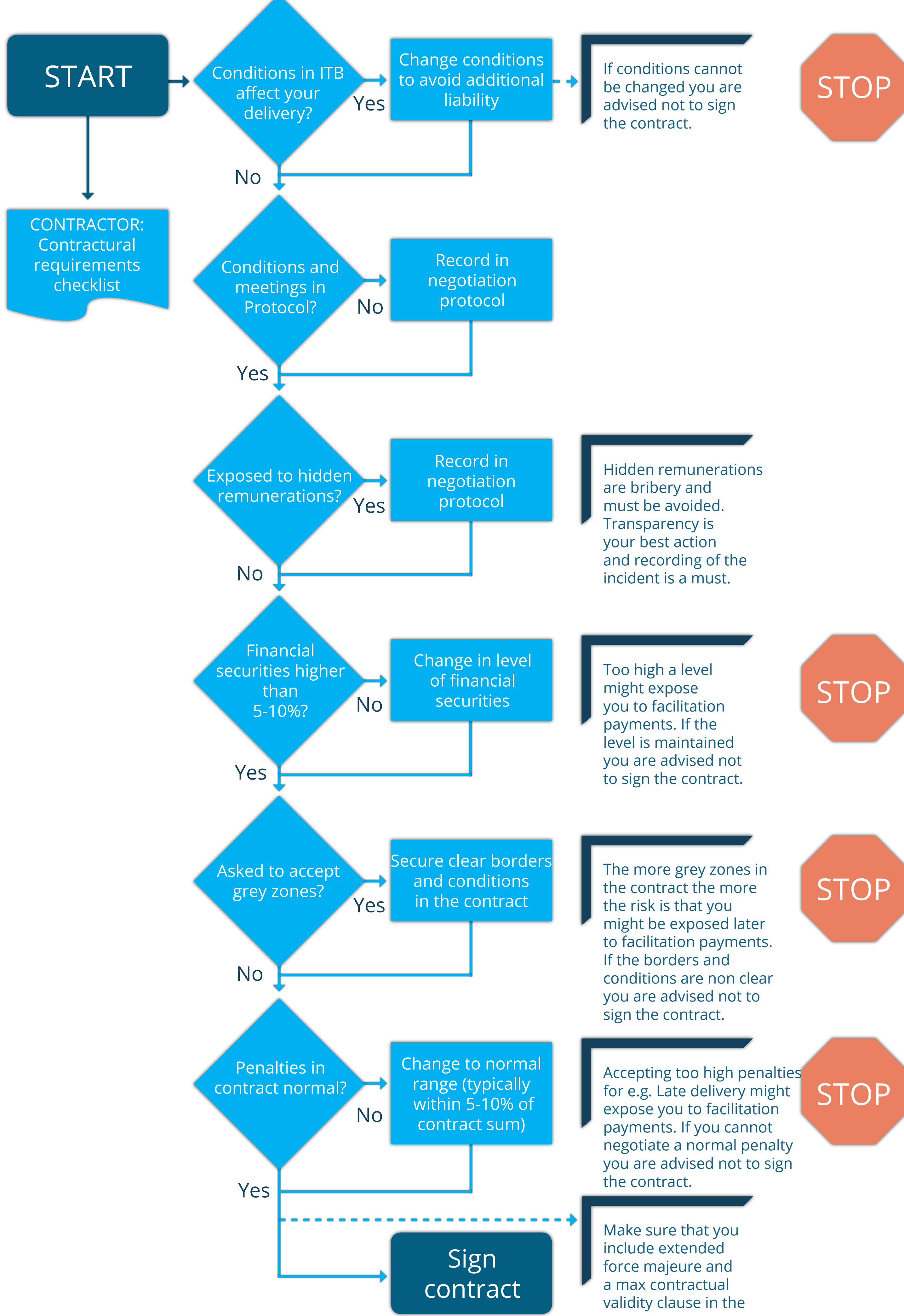
CONTRACTOR SCREENING FLOWCHART

The Contractor Screening Flowchart is a contractor and subcontractor procedure to help suppliers identify situations where bribery might occur throughout the process: from the initial offer, to negotiation, contract signing, execution and delivery. The procedure contains practical information for handling issues throughout the process. It is based on an active business code of conduct on corruption and bribery. It focuses solely on corruption risks associated with contractor and subcontractor contracts.

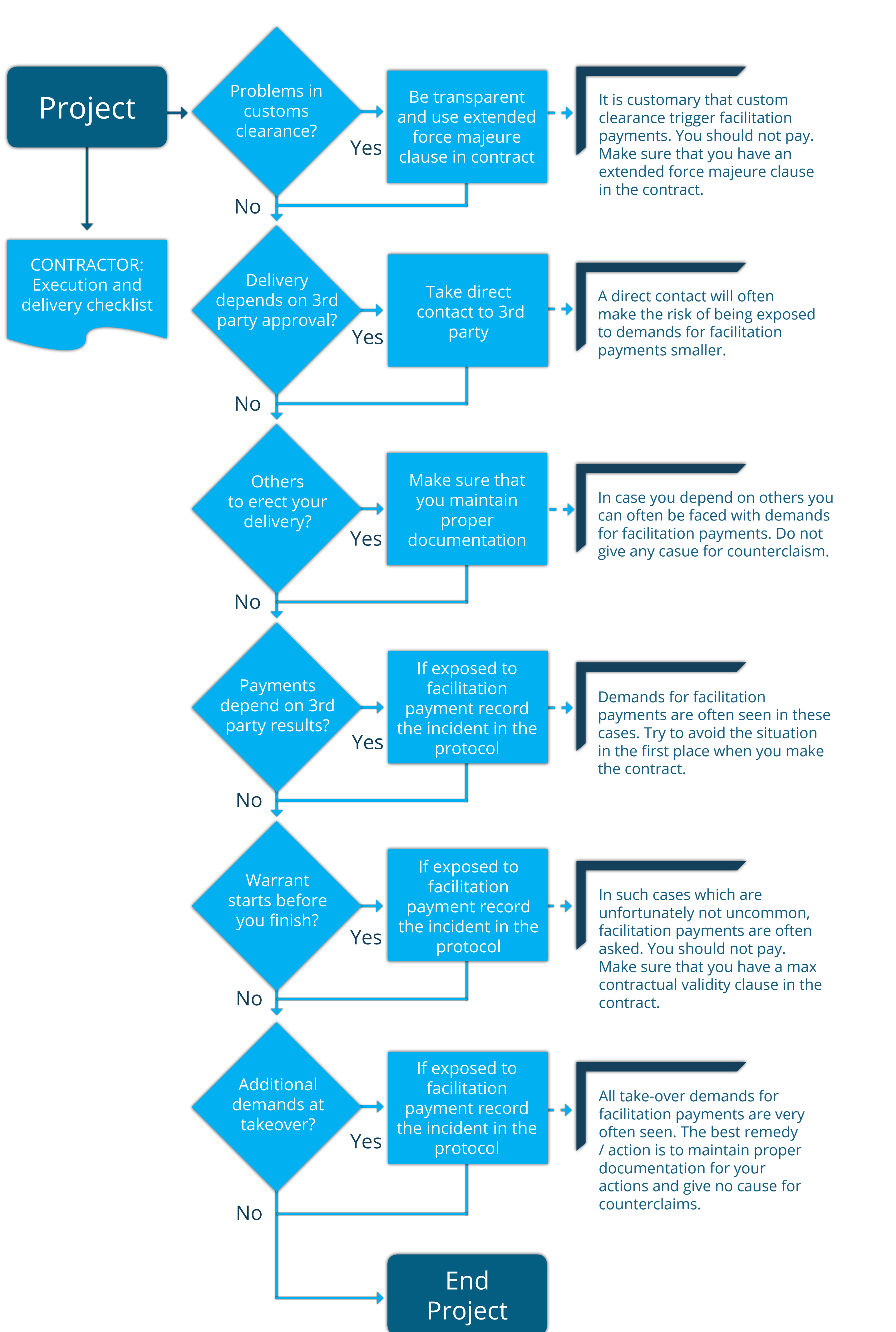
INVITATION TO SUBMIT OFFER



CONTRACTUAL REQUIREMENTS



EXECUTION AND DELIVERY



GAN'S ALL-IN-ONE COMPLIANCE MANAGEMENT SOFTWARE



MONITORING & REPORTING

Track, monitor and report your compliance status, data and results in a single place.



RISK ASSESSMENT

Create risk reports and implement mitigation activities through a global risk catalogue and local manager inputs.



POLICY

Manage your policies: Develop, publish and assign policies to employee groups for signing. Track and report completion rates.



TRAINING

Train employee groups with e-learning courses and tests. Assign to your employee groups. Track and report the results.



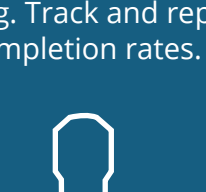
DUE DILIGENCE

Evaluate, track and store third party and employee due diligence automatically.



GIFTS & HOSPITALITY

Register gifts. Upload documentation. Review, approve, or reject requests. And, monitor and report.



CASE MANAGEMENT

Automatically create new cases, manage tasks and report results with ease. Always keep stakeholders in the loop.



MANAGEMENT

Assign, coordinate, and manage compliance initiatives with employees, business partners, HR, Finance, and more.